



RPZ-20c



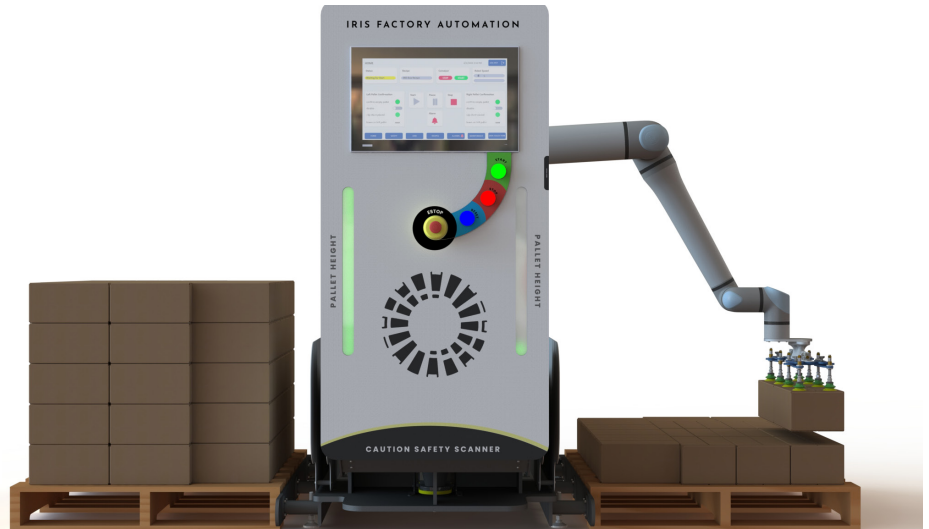
IRIS
FACTORY AUTOMATION

REBELPAK
EQUIP DIFFERENTLY / AN IRIS FACTORY AUTOMATION COMPANY

WHY WORK WITH IRIS FACTORY AUTOMATION?

“

At IRIS, we treat our clients the same way we would want to be treated. We work hard to understand your goals and expectations, we leverage our experience to take our clients down the right path, and we do what we say we're going to do.



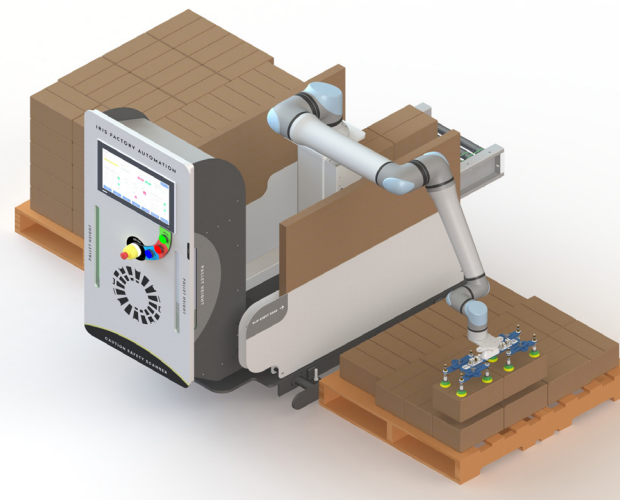
IRIS is an organization that listens to our clients, thinks outside the box, and does what it takes to produce reliable and innovative automation - **just ask our clients, they'll tell you.**

INTRODUCING THE RPZ-20c

PALLETIZING WITH A COLLABORATIVE ROBOT

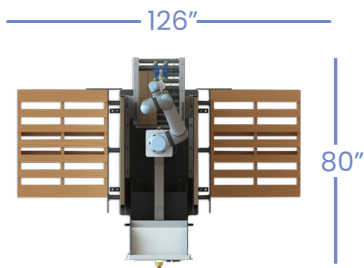
Leveraging collaborative robot technology is about more than safety. It's a paradigm shift away from traditional automation. It allows clients to deploy affordable, point-of-use automation solutions targeting repetitive activities where ergonomic and general safety concerns are present.

When it comes to palletizing, the RPZ-20c enables clients to mitigate the risks associated with a changing labor landscape by providing a system targeting end of line packaging requirements typically served by manual operation in an exceptionally small footprint.



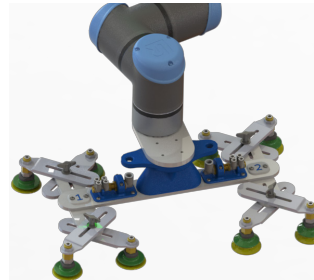
SYSTEM FEATURES

COMPACT SIZE



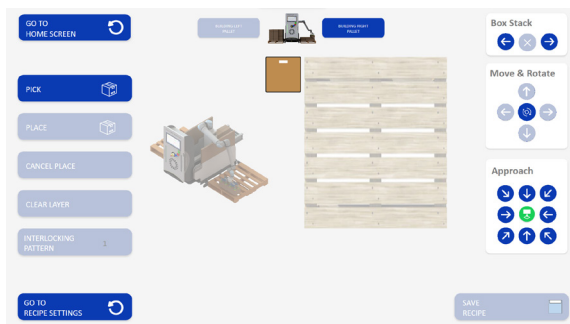
- 126" W x 80" D
- Front area scanner
- Option to include hard guarding

FLEXIBLE "SPIDERPIK" EOAT



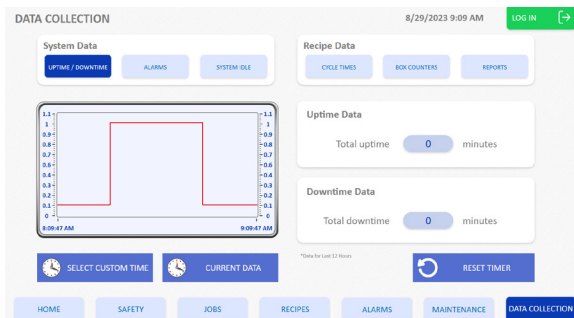
- Built for high mix, low volume production
- Tool-less adjustment
- Easy changeover between products

PALLETIZING WIZARD



- Drag and drop pallet builder
- Customize pallet patterns
- Wizard based recipe building
- Import and export recipes between palletizers

DATA LOGGING



- Ability to identify fault trends to improve productivity
- Uptime and downtime tracking
- Analyze both current and past data using custom time frames

INTEGRATED SLIP SHEETS



- Two easels on left and right side
- Ease of loading and unloading sheets via front of system

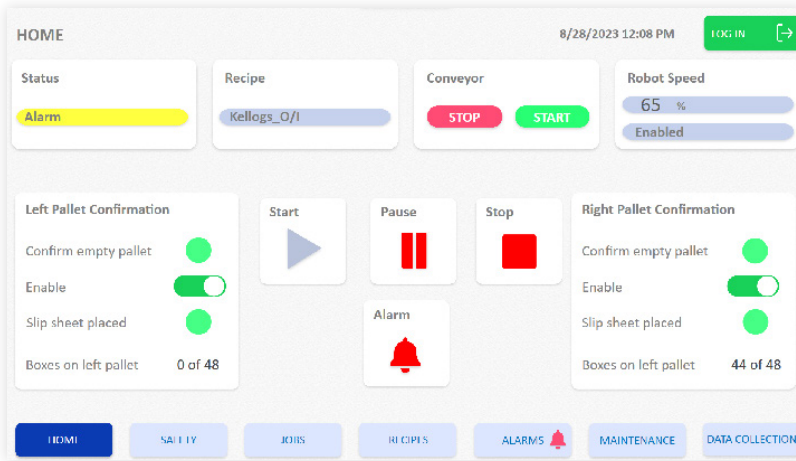
VISUAL FACTORY FEATURES



- At a glance assessment of system status
- IO-link smart indicator lighting
- Pallet height indication

Easily Navigate the User Interface

Our palletizing software features an intuitive graphic interface that works directly with the robot. End-users build pallets by entering dimensions and dragging boxes into the position they are to be placed.

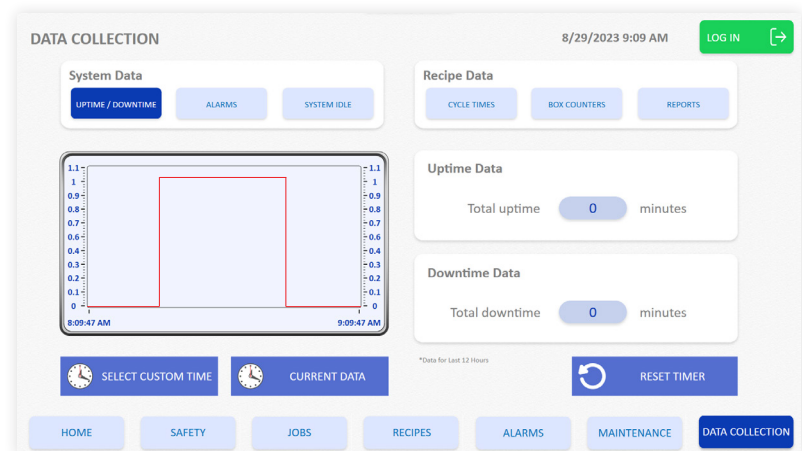


AT A GLANCE STATUS VIEWING

- User-friendly layout
- Cumulative totals
- Recipe management
- Tiered security access
- Intuitive job selection

ON-BOARD DATA COLLECTION

- Ability to identify fault trends to improve productivity
- Uptime and downtime tracking
- Analyze both current and past data using custom time frames
- Ability to track events performed by a current user and at what time



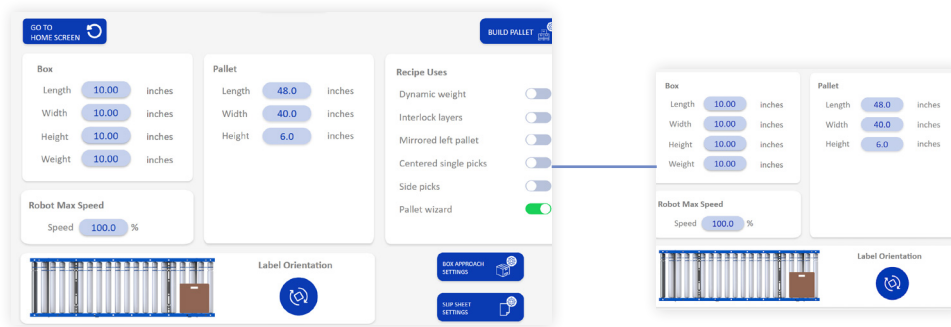
RESIDENT SUPPORT DOCUMENTATION

- Digital copies of the manual, OPLs and schematics accessible through the HMI
- Training manuals for system overview and troubleshooting
- On-the-go customer support available via QR code help ticket submission

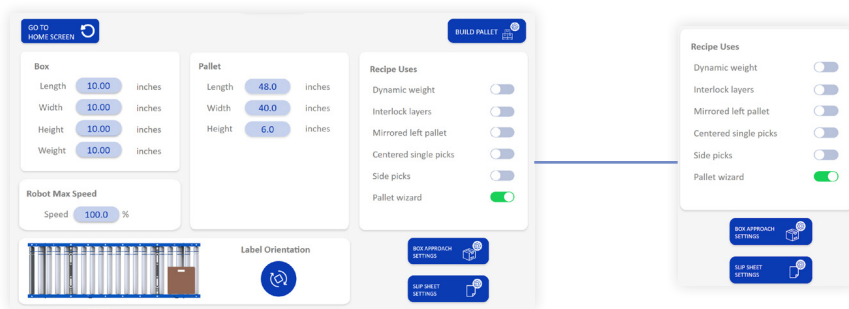


How do I create a new pallet pattern on the HMI?

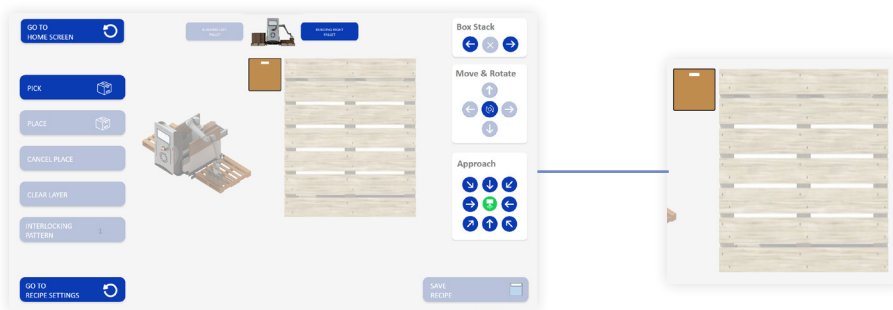
STEP 1: ENTER BOX DIMENSIONS AND LABEL ORIENTATION



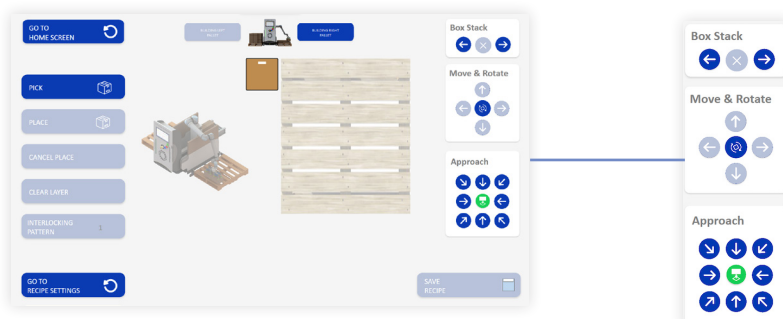
STEP 2: SELECT YOUR PALLET SETTINGS



STEP 3: BUILD YOUR PALLET USING DRAG AND DROP FEATURE



STEP 4: SELECT YOUR APPROACH AND FINE TUNE BOX PLACEMENT



STEP 5: SAVE YOUR RECIPE AND BEGIN PALLETIZING

SPECS

Power Requirement	110V/20A
Electrical Connection Style	Twist lock 120
Air Requirement	90 PSI
Air Connection Style	Air Quick Disconnect
System Dimensions	126"W x 80"D
Maximum Payload	20 KG
Maximum Pick Rate	Up to 7 Cycles/Minute
Maximum Pallet Height	83"

FAQs

Can I add tier sheets?	Yes, the RPZ-20c has integrated tier sheet magazines on either side of the pallet.
Can I do single or dual pallet configurations?	Yes! You can palletize on one or both sides.
How long does it take to install?	Most systems are up and running within 2 days.
Do you ship internationally?	Yes
Can IRIS support my system remotely?	Yes
Can I integrate with my AMR?	Yes
Can I export my production data?	Yes

CONTACT INFORMATION

Email: Info@iriscs.com

Phone: (630) 634-7700

Website: www.irisfactoryautomation.com

Address: 2570 Beverly Dr, Suite 126 Aurora IL 60502